



**Joniec**



---

PALISADES

---

**STONE  
MOGIELICA**

[www.joniec.eu](http://www.joniec.eu)

**F.P.U.H. JONIEC®**  
Mieczysław Joniec  
Tymbark 109  
34-650 Tymbark

**t:** +48 18 332 53 90  
**m:** +48 602 539 182  
**e:** [joniec@joniec.pl](mailto:joniec@joniec.pl)





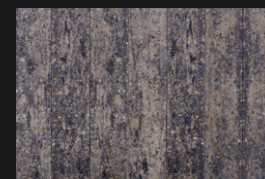
## colours



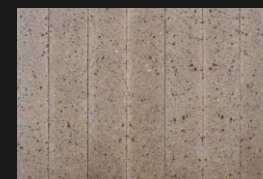
bronzite



black



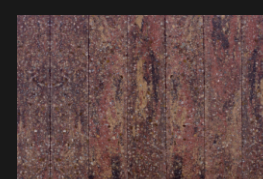
onyx



sand



pyrite



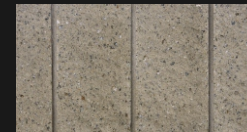
vera

MOGIELICA palisades are a very practical garden decoration, an alternative to classic fences. Using palisades, we will not only organize the garden, but also diversify the space. The scope of use of the palisade is enormous and depends only on the imagination of the person designing the garden. The use of palisades will enable the creation of an extraordinary, living space intended for rest and relaxation.





## colours



sand



pyrite



onyx



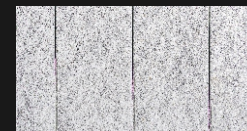
goethit



black



bronzite



silver



alaska



vera

STONE palisades are elements of small architecture that organize the space in a subtle way. They are a decorative element that allows you to emphasize the various shapes of the surface. Concrete edges can also be used to create slope reinforcements or to build terraces of various levels. They are perfect for framing lawns, driveways, parking lots and flower beds.

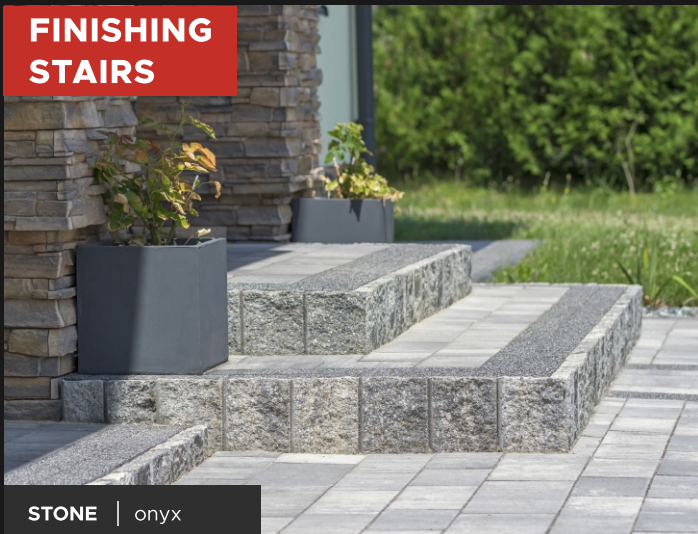


OUR GARDEN ARRANGEMENTS

# GET INSPIRED!



## FINISHING STAIRS



STONE | onyx

## STRENGTHENING OF DRIVEWAYS



MOGIELICA | bronzite

## CONSTRUCTION OF MULTI-LEVEL TERRACES



MOGIELICA | pyrite

## CONSTRUCTION OF CURBS



MOGIELICA | pyrite

## STRENGTHENING OF SLOPES



STONE | onyx

## CONSTRUCTION OF FLOWER BEDS



MOGIELICA | pyrite